

OFFICE SPACE FOR LEASE

BOYCE PLAZA I

1035 BOYCE ROAD

PITTSBURGH, PA 15241

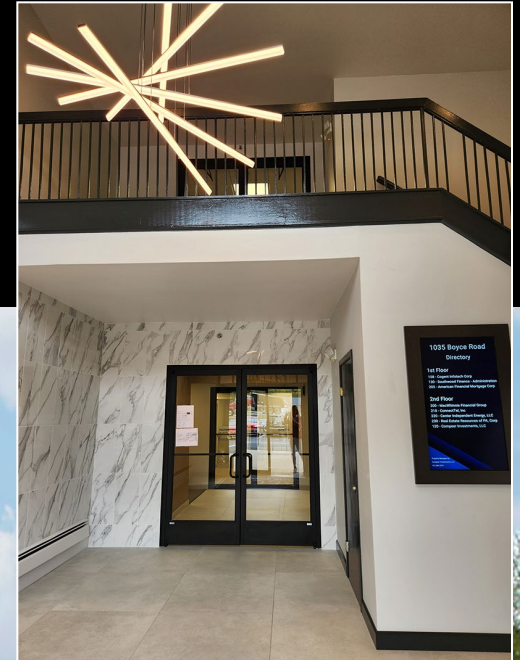
LEASE PRICE:
\$18.95 PSF FS

NEWLY RENOVATED!

Improvements made to restrooms, hallways,
common kitchen & common conference room

AVAILABLE SPACE

2nd Floor: 1,317 SF \pm
2,004 SF \pm



CBRE

Please contact:

NICOLE CLACKSON ROSSMAN

Senior Associate

412.471.3385

nicole.clackson@cbre.com

1035 BOYCE ROAD



Common Area Conference Room



Common Area Kitchen

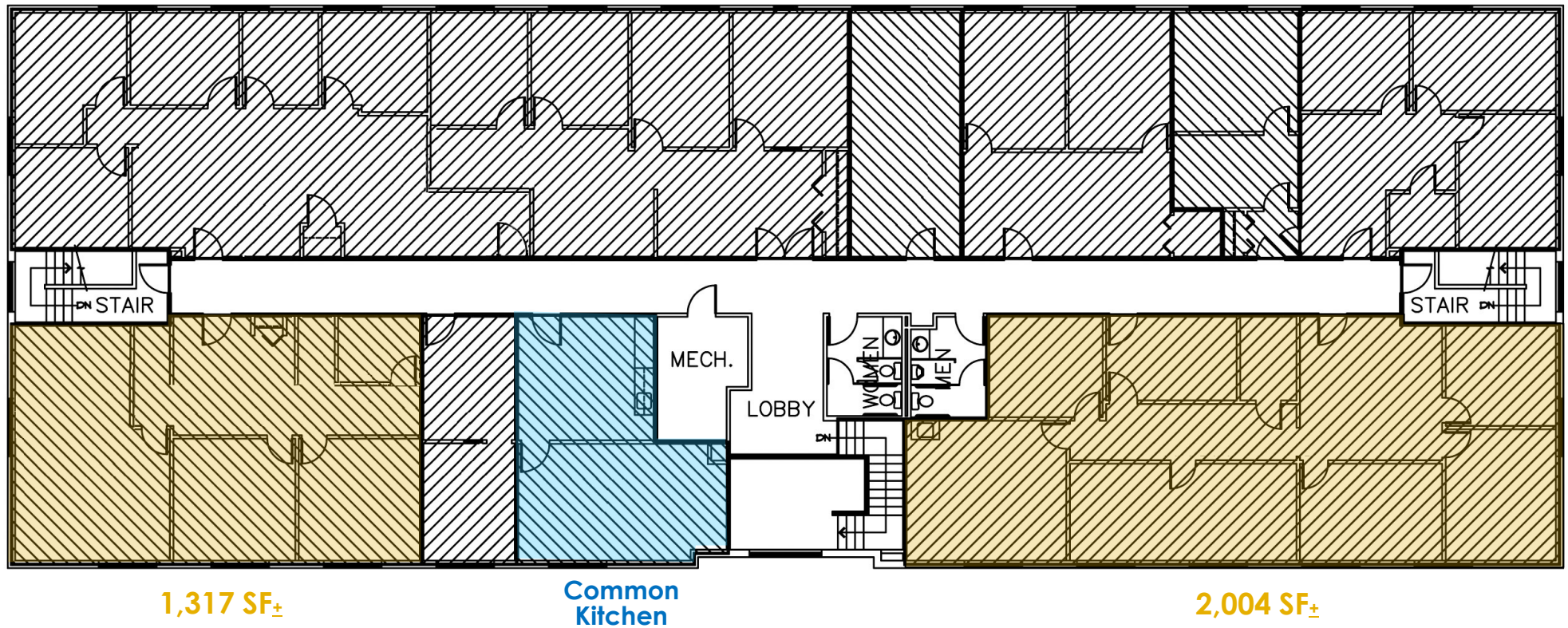


AMENITIES

- ✓ Two-Story Office Building
- ✓ Common Area Kitchen and Conference Room
- ✓ Boyce Road Signage
- ✓ 1.5 miles to Rt. 19; 3.8 miles to I-79
- ✓ Property Manager on Site
- ✓ Signage Available
- ✓ Verizon Fiber Internet Available

1035 BOYCE ROAD

2nd FLOOR AVAILABILITY

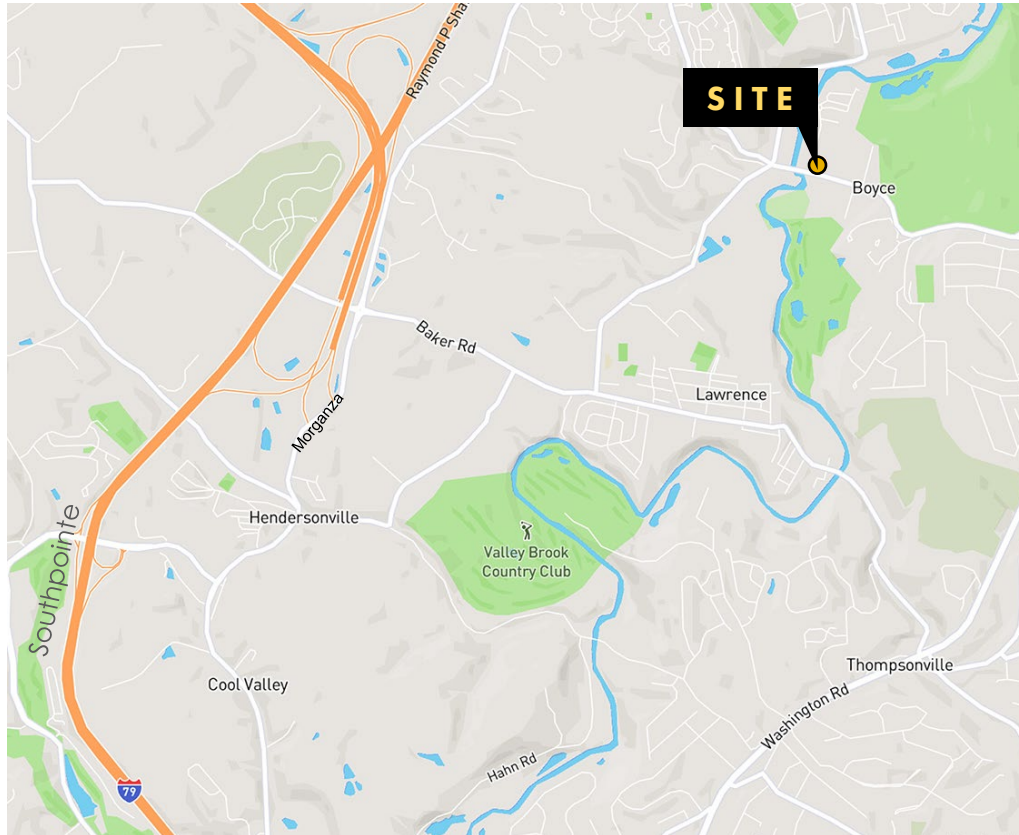


CBRE

1035 BOYCE ROAD

RENOVATIONS INCLUDE:

- ✓ New HVAC System
- ✓ Updated Common Areas
- ✓ Parking Lot Improvements
- ✓ Refreshed Landscaping
- ✓ New Paint & Carpet in Every Office Suite
- ✓ Beautiful Common Area Kitchen & Conference Room



CBRE

301 Grant Street, Suite 4000 | Pittsburgh, PA 15219
cbre.com

©2025 CBRE, Inc. All rights reserved. This information has been obtained from sources believed reliable, but has not been verified for accuracy or completeness. You should conduct a careful, independent investigation of the property and verify all information. Any reliance on this information is solely at your own risk. CBRE and the CBRE logo are service marks of CBRE, Inc. All other marks displayed on this document are the property of their respective owners, and the use of such logos does not imply any affiliation with or endorsement of CBRE.

