

OFFICE SPACE FOR LEASE

BOYCE PLAZA I

1035 BOYCE ROAD

PITTSBURGH, PA 15241

AVAILABLE SPACE

- 1st: 1,088 SF \pm
- 2nd: 1,502 SF \pm
1,317 SF \pm
1,297 SF \pm



RENOVATIONS UNDERWAY!

Improvements to Restrooms, Hallways, Common Kitchen and Common Conference Room to be completed by March.

LEASE PRICE: \$18.95 PSF FS



CBRE

Please contact:

NICOLE CLACKSON ROSSMAN

Senior Associate

412.471.3385

nicole.clackson@cbre.com

1035 BOYCE ROAD



AMENITIES

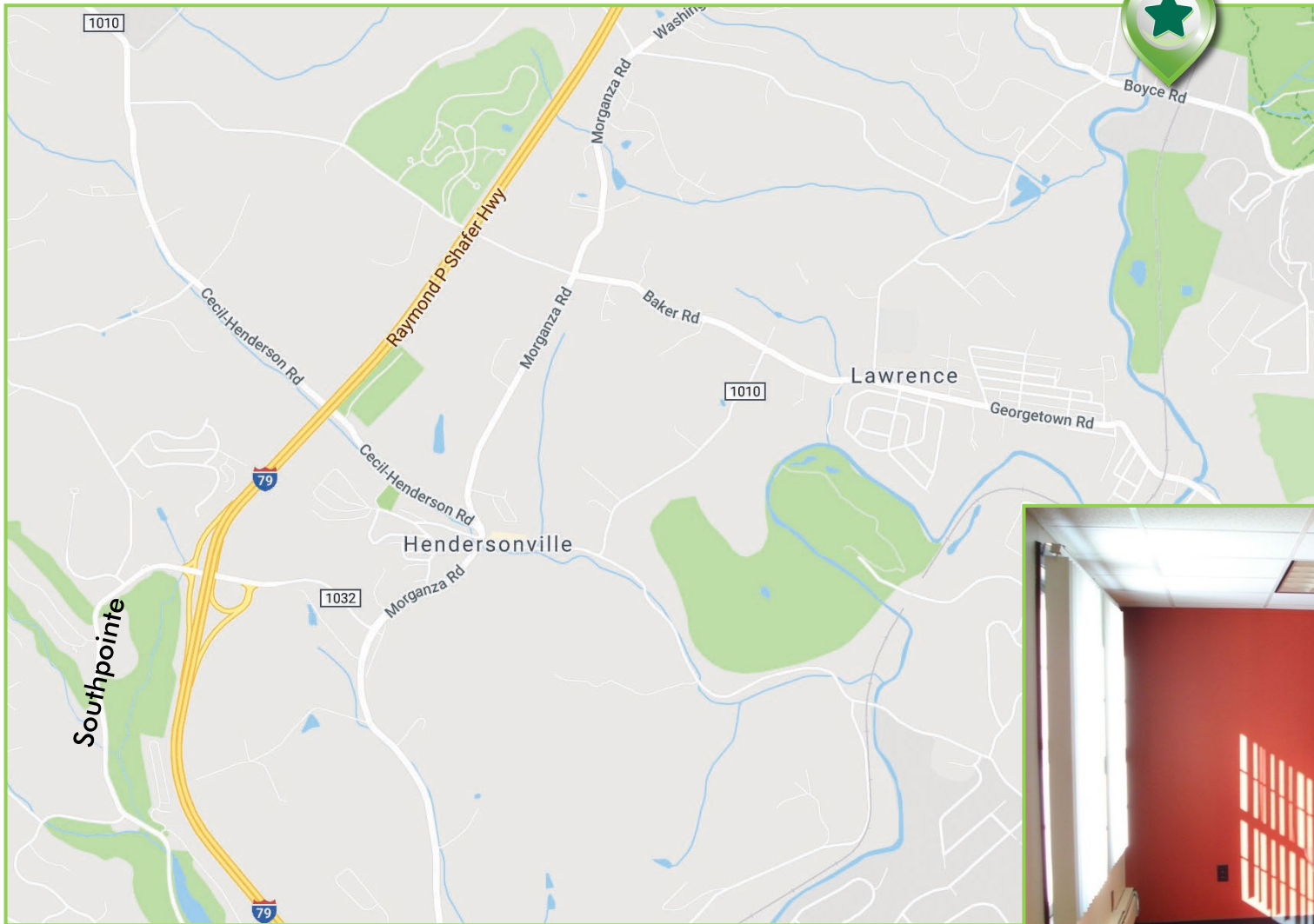
- Two-Story Office Building
- Common Area Kitchen and Conference Room
- Boyce Road Signage
- 1.5 miles to Rt. 19; 3.8 miles to I-79
- Property Manager on Site
- Signage Available
- Verizon Fiber Internet Available



1035 BOYCE ROAD

RENOVATIONS INCLUDE:

- New HVAC System
- Updated Common Areas
- Parking Lot Improvements
- Refreshed Landscaping
- New Paint & Carpet in Every Office Suite
- Beautiful Common Area Kitchen & Conference Room



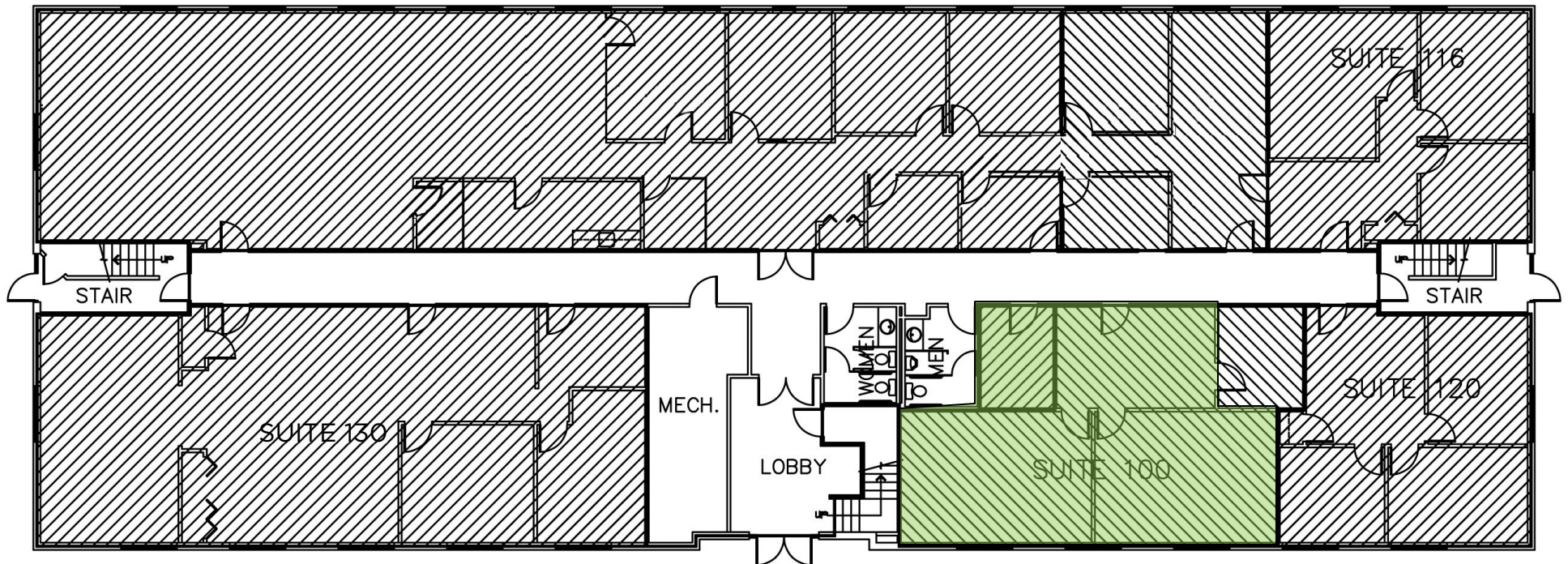
Common Area Kitchen



Common Area Conference Room



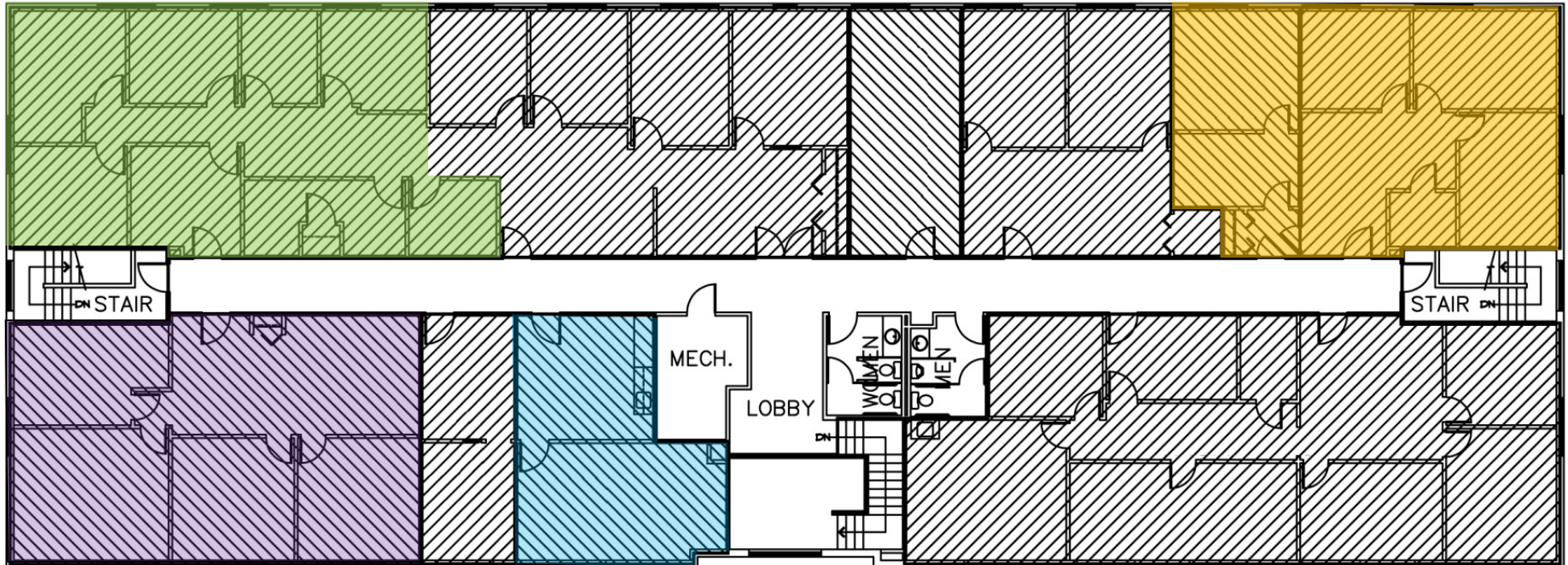
US Steel Tower | 600 Grant Street, Suite 4800 | Pittsburgh, PA 15219
www.cbre.com



1,088 SF
Available Immediately

1,502 SF
Available 6/1/2022

1,297 SF
Available 6/1/2022



1,317 SF
Available Immediately

**Common
Kitchen**