

Office Space for Lease - Southpointe

\$18.50 PSF Full Service

4 Grandview Circle

Canonsburg, PA 15317



3,181 SF_± / 3,601 SF_± / 3,346 SF_±

Available on 2nd Floor

CBRE

Property Features

- Building Size: 27,000 SF
- Two-Story Office Building
- Furniture Available
- Well-Designed Office Layout
- Move-in Condition
- Abundant Free Parking
- Floor Size: 13,500 SF

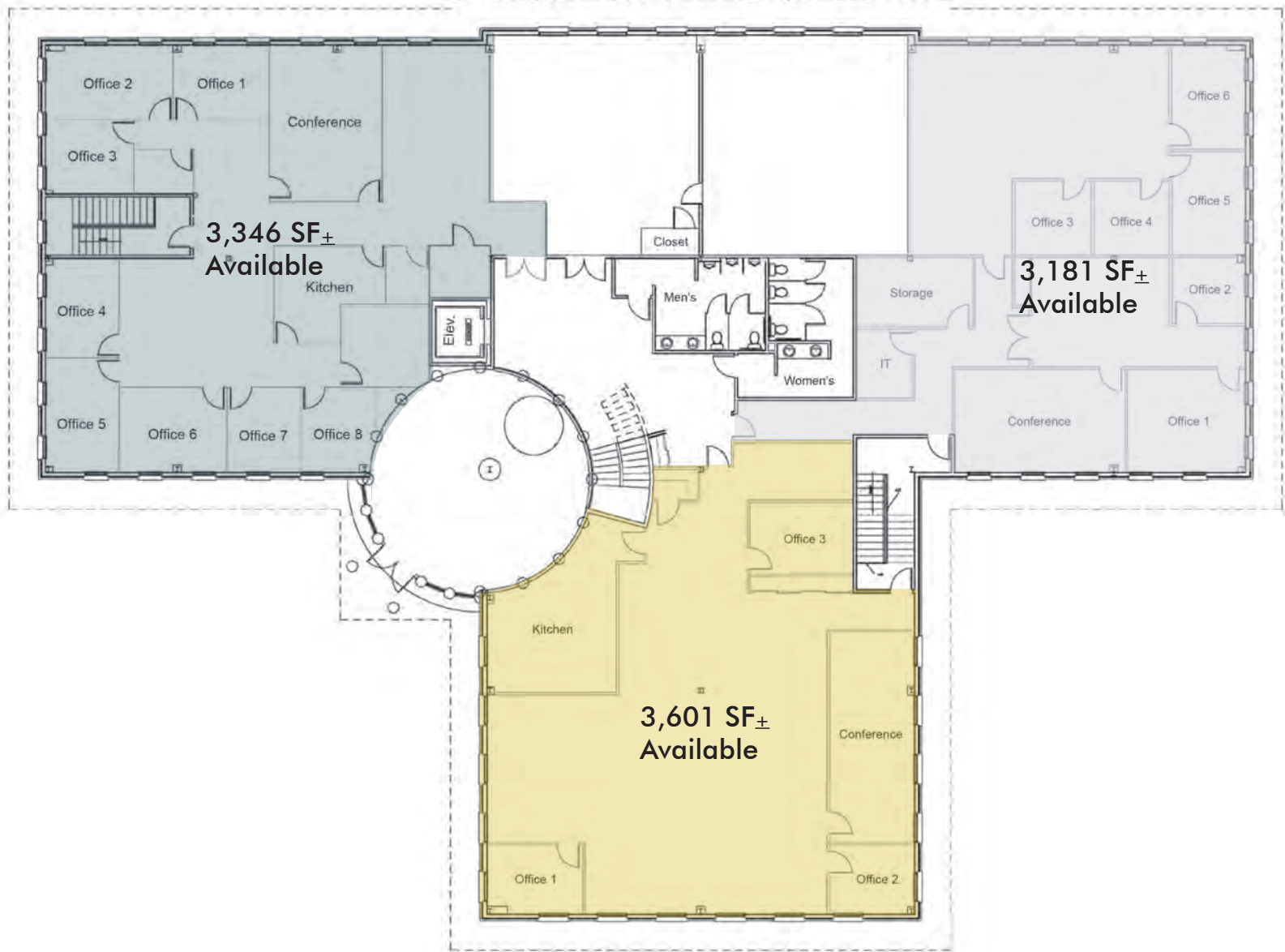


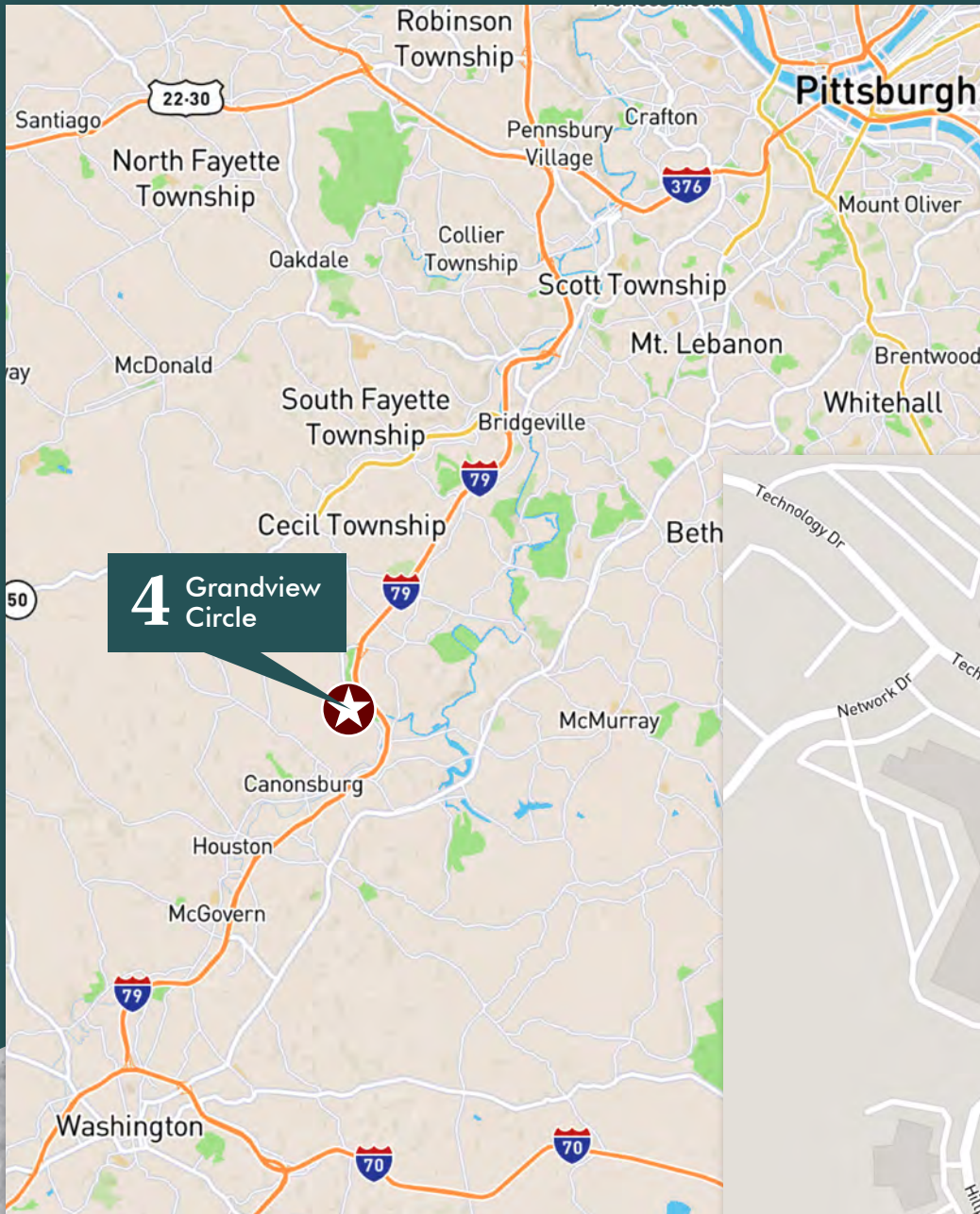
■ Southpointe Amenities

- Area Restaurants: All Star Sports Bar and Grill, Toscana Brick Oven, Zoup!, Crazy Mocha, Jackson's, and Los Chiludos
- Golf Course
- Walking Trails
- Health Club
- PNC Bank
- Other Numerous Retail Shops



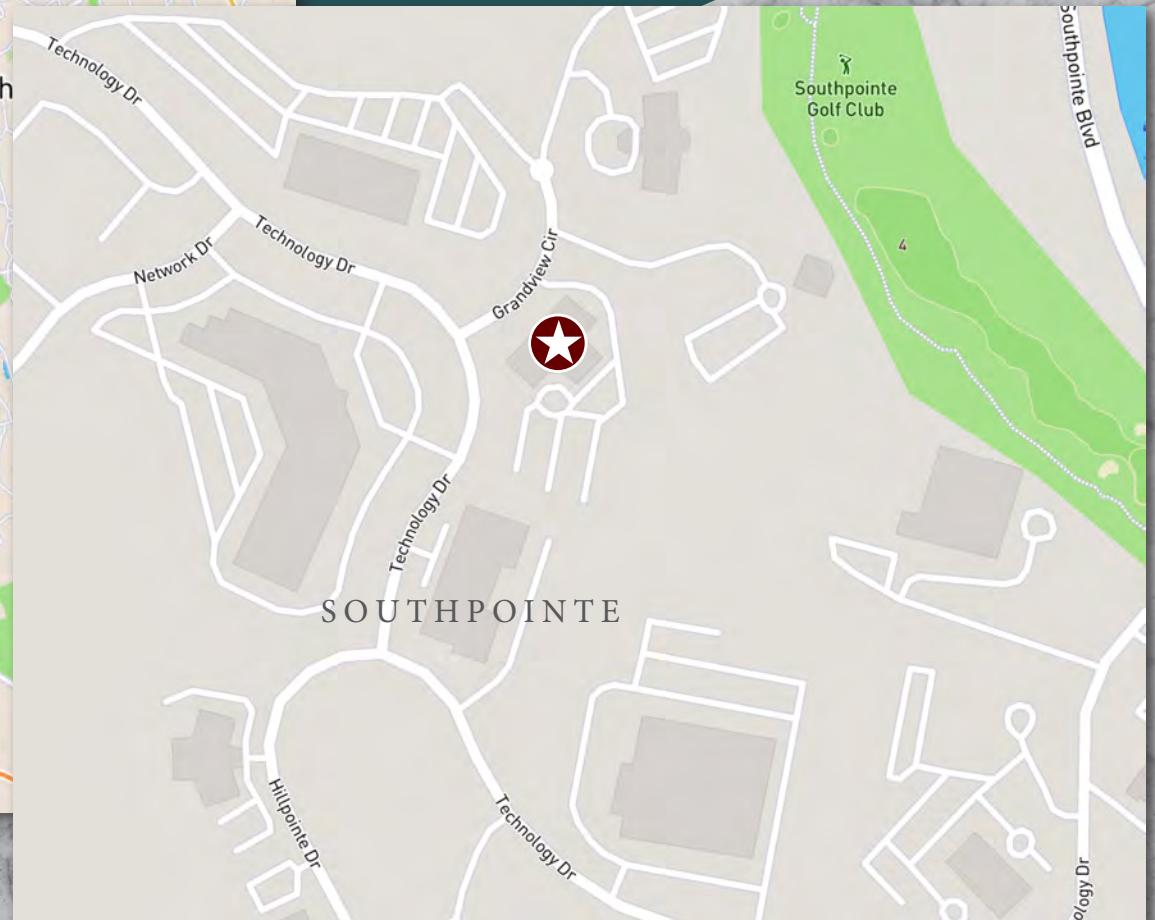
2nd Floor Plan





Location

- 1.3 miles / 3 minutes from I-79 (Southpointe Exit)
- 7 minutes / 2.4 miles from Canonsburg
- 30 minutes / 20 miles from downtown Pittsburgh
- 30 minutes / 24 miles from Pittsburgh International Airport
- 20 minutes / 10 miles from Washington





Contact Us

NICOLE CLACKSON ROSSMAN

Senior Associate

412.471.3385

nicole.clackson@cbre.com

KIM CLACKSON, SIOR

Executive Vice President

412.471.3018

kim.clackson@cbre.com

MATT CLACKSON

First Vice President

412.471.4069

matt.clackson@cbre.com

CBRE, INC.

600 Grant Street, Suite 4800

Pittsburgh, PA 15219

www.cbre.us/pittsburgh



© 2022 CBRE, Inc. All rights reserved. This information has been obtained from sources believed reliable, but has not been verified for accuracy or completeness. You should conduct a careful, independent investigation of the property and verify all information. Any reliance on this information is solely at your own risk. CBRE and the CBRE logo are service marks of CBRE, Inc. All other marks displayed on this document are the property of their respective owners, and the use of such logos does not imply any affiliation with or endorsement of CBRE. Photos herein are the property of their respective owners. Use of these images without the express written consent of the owner is prohibited.