

Office Space for Lease - Southpointe

\$18.50 PSF Full Service

4 Grandview Circle

Canonsburg, PA 15317

8,243 SF_± / 3,346 SF_± / 3,181 SF_± / 1,716 SF_±

Available on 2nd Floor

CBRE

■ Property Features

- Building Size: 27,000 SF
- Two-Story Office Building
- Furniture Available
- Well-Designed Office Layout
- Move-in Condition
- Abundant Free Parking
- Floor Size: 13,500 SF

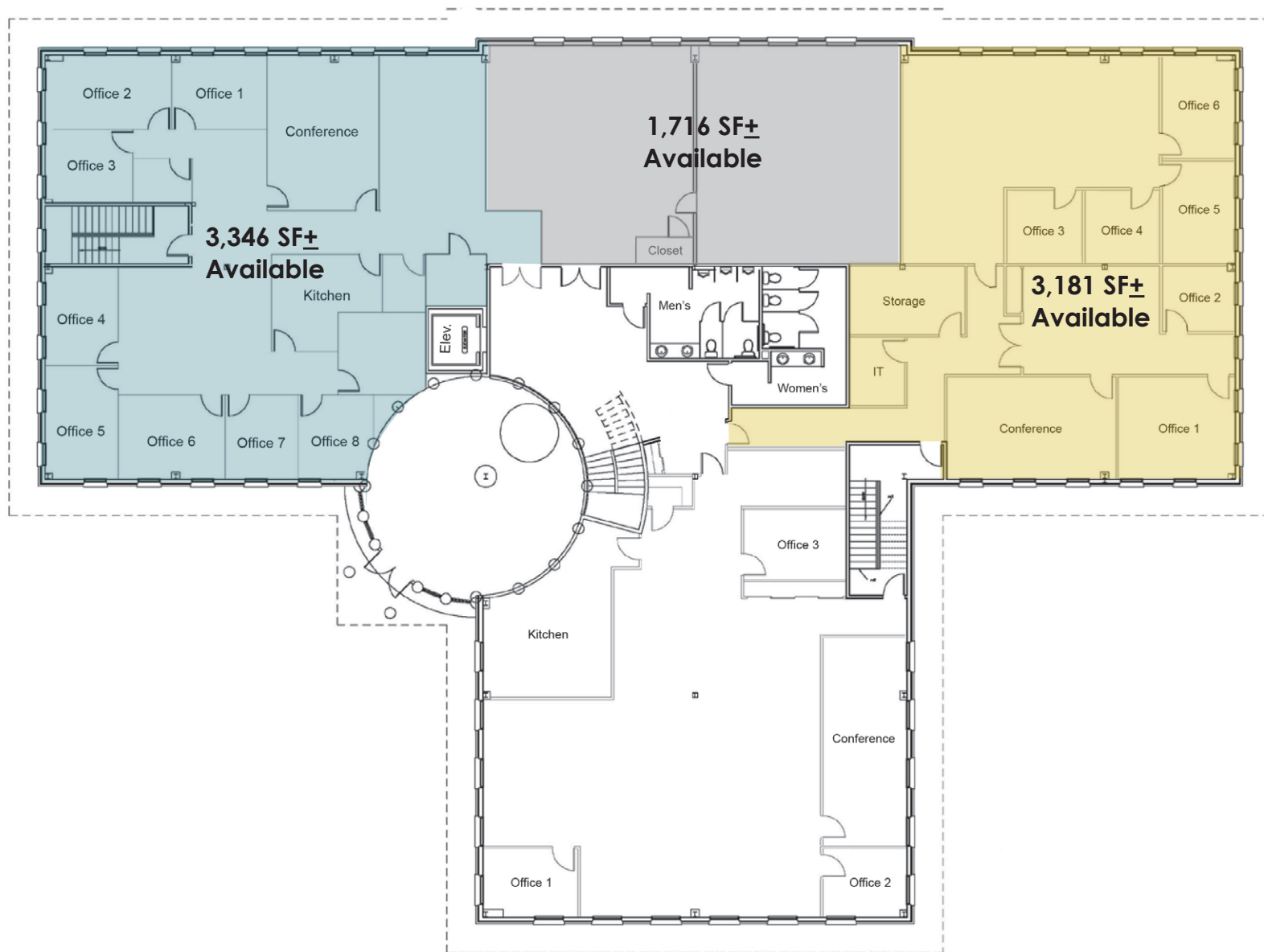


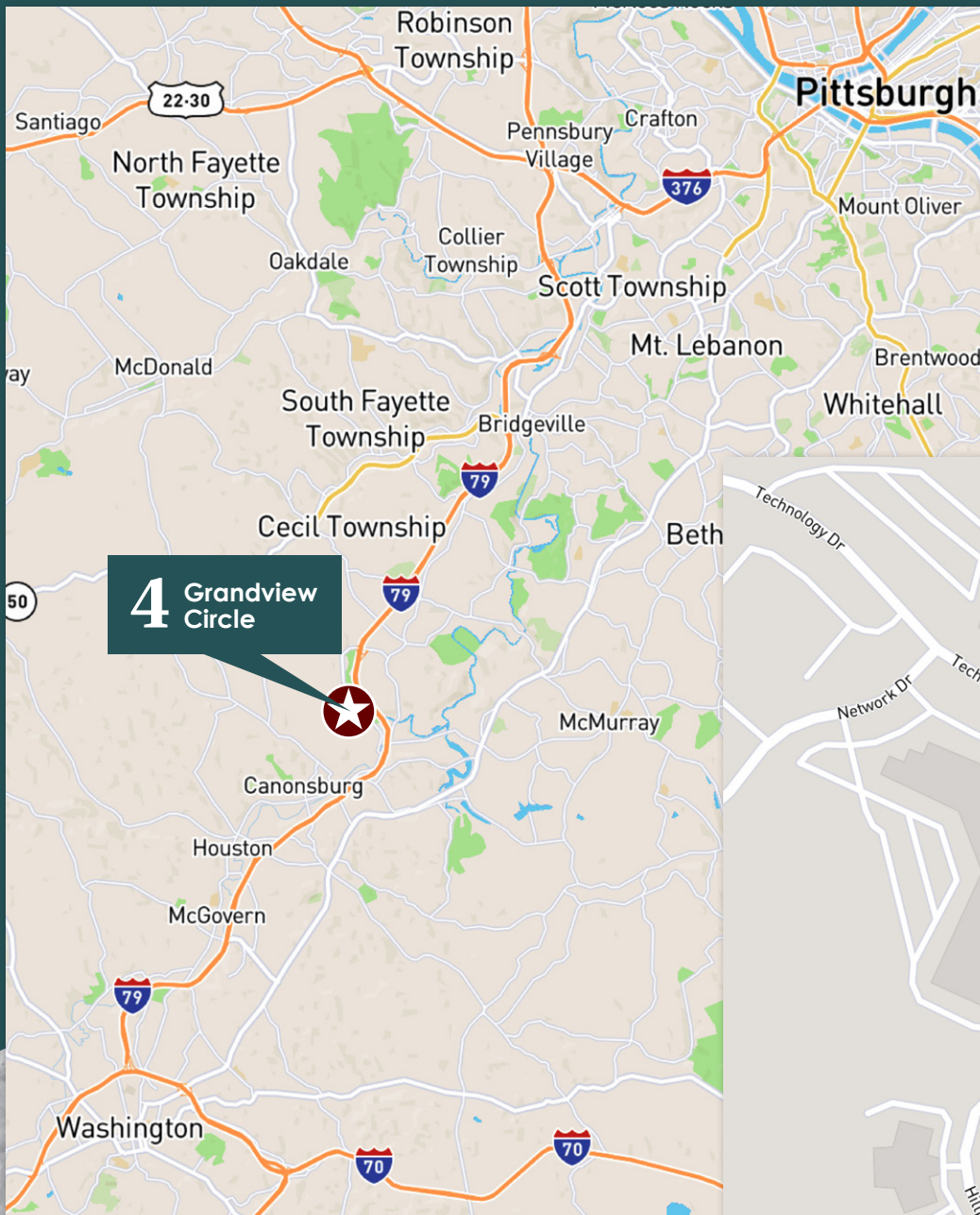
■ Southpointe Amenities

- Area Restaurants: All Star Sports Bar and Grill, Toscana Brick Oven, Zoupi!, Crazy Mocha, Jackson's, and Los Chiludos
- Golf Course
- Walking Trails
- Health Club
- PNC Bank
- Other Numerous Retail Shops



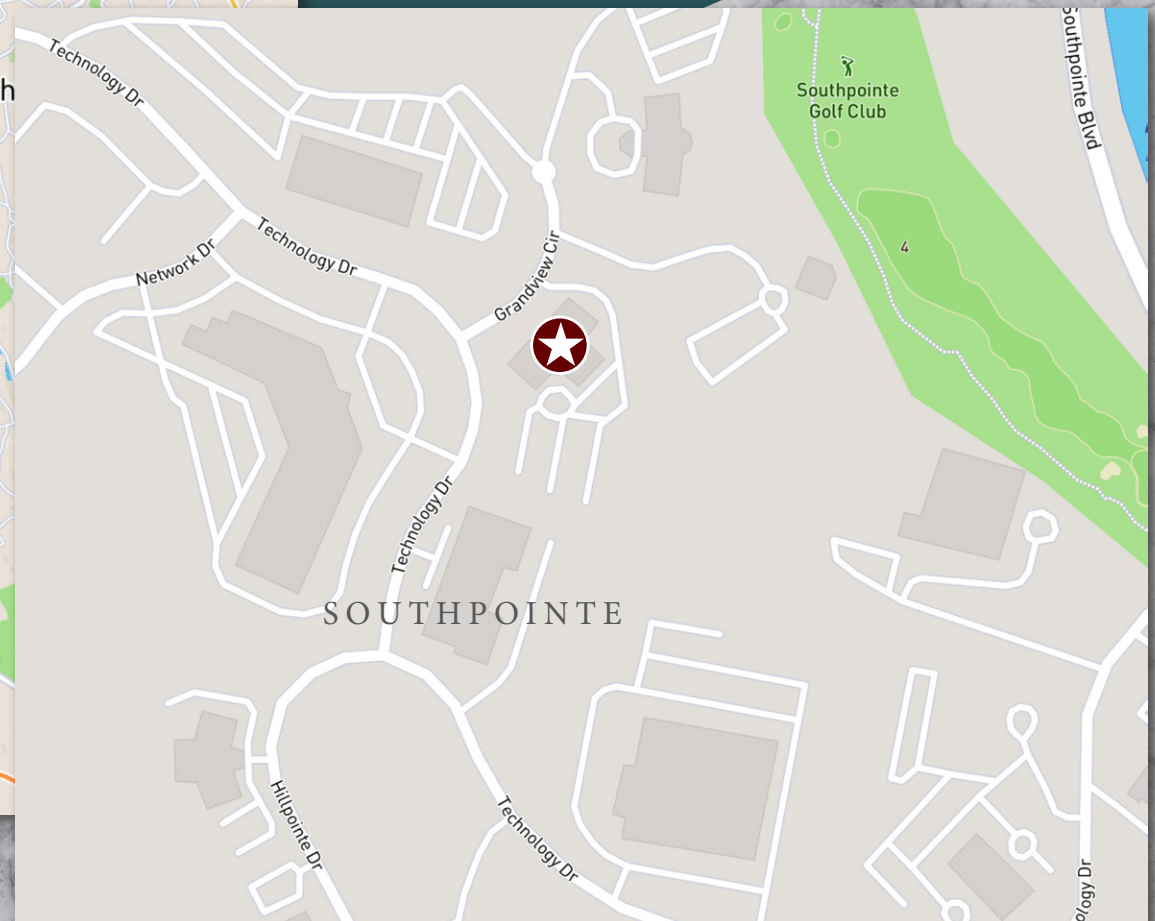
2nd Floor Plan





Location

- 1.3 miles / 3 minutes from I-79 (Southpointe Exit)
- 7 minutes / 2.4 miles from Canonsburg
- 30 minutes / 20 miles from downtown Pittsburgh
- 30 minutes / 24 miles from Pittsburgh International Airport
- 20 minutes / 10 miles from Washington





■ Contact Us

NICOLE CLACKSON ROSSMAN

Senior Associate
412.471.3385
nicole.clackson@cbre.com

KIM CLACKSON

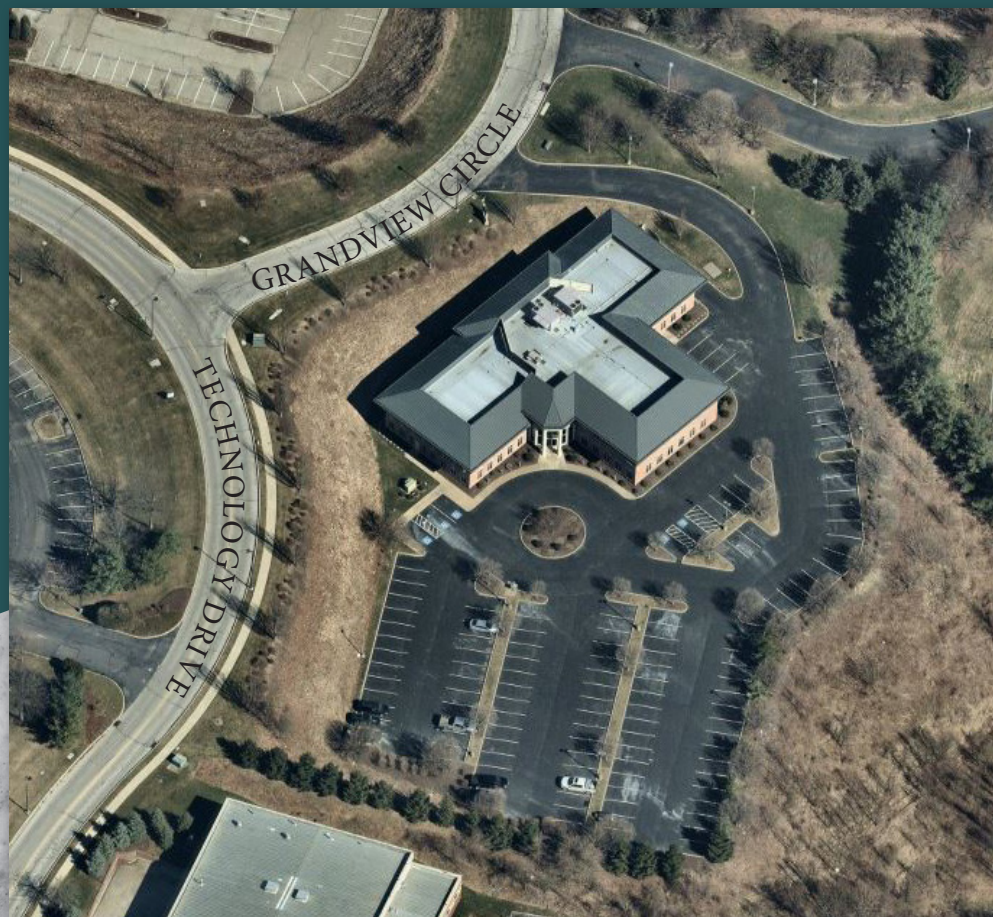
Executive Vice President
412.471.3018
kim.clackson@cbre.com

MATT CLACKSON

Senior Vice President
412.471.4069
matt.clackson@cbre.com

CBRE, INC.
301 Grant Street
Suite 4000
Pittsburgh, PA 15219

www.cbre.com



©2025 CBRE, Inc. All rights reserved. This information has been obtained from sources believed reliable, but has not been verified for accuracy or completeness. You should conduct a careful, independent investigation of the property and verify all information. Any reliance on this information is solely at your own risk. CBRE and the CBRE logo are service marks of CBRE, Inc. All other marks displayed on this document are the property of their respective owners, and the use of such logos does not imply any affiliation with or endorsement of CBRE. Photos herein are the property of their respective owners. Use of these images without the express written consent of the owner is prohibited.