

FOR LEASE

# McCLAREN ROAD

CORAOPOLIS, PA 15108

INDUSTRIAL LAND  
BUILD-TO-SUIT

UP TO  
**390,174 SF**

**KIM CLACKSON, SIOR**

Executive Vice President

412.471.3018 | kim.clackson@cbre.com

**MATT CLACKSON**

Senior Vice President

412.471.4069 | matt.clackson@cbre.com

# SKYVIEW

BUSINESS PARK



WAREHOUSE | DISTRIBUTION OPPORTUNITY

FINDLAY TOWNSHIP | ALLEGHENY COUNTY

Marketed Exclusively by:

**CBRE**

Developed by:

**NEYER**  
AL. NEYER | EST. 1894

# SKYVIEW BUSINESS PARK

## SITE PLAN



### Two-Building Site Plan

<b>BUILDING 1:</b>	280,826 SF
DOCK POSITIONS:	47 Potential
DRIVE-INS:	2
PARKING STALLS:	152

<b>BUILDING 2:</b>	109,348 SF
DOCK POSITIONS:	18 Potential
DRIVE-INS:	2
PARKING STALLS:	117
TRAILER STALLS:	22

ZONING: MXU - MIXED USE | ADJACENT TO I-376 | HIGHWAY EXPOSURE

# SKYVIEW BUSINESS PARK

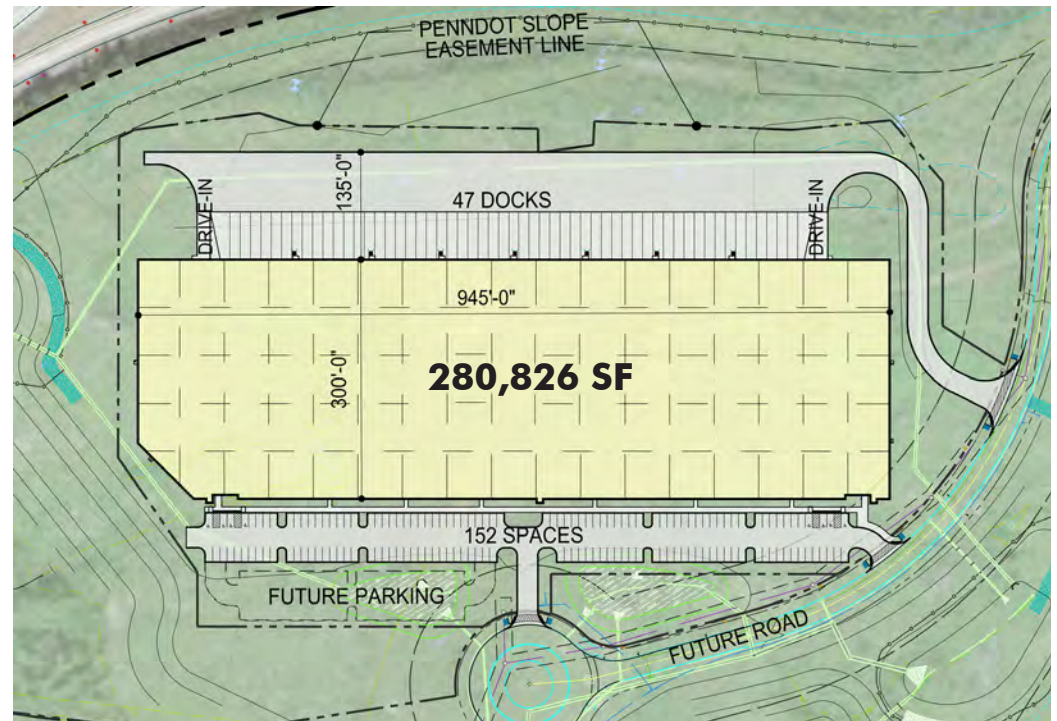
## BUILDING ONE

• 280,826 SF



UNDER CONSTRUCTION - CORE & SHELL COMPLETION: OCTOBER 1, 2022

Total Building Size:	280,826 SF±
Office Space:	Build to Suit
Clear Height:	32' After Loading Bay
Column Spacing:	Warehouse Bays: 60' x 56'
Truck Court:	135' deep
Fire Protection System:	ESFR K-17 System
Dock Positions:	47 Potential
Drive-In Doors:	2
Walls:	8" Pre-Cast Concrete Wall Panels
Concrete Slab:	7" Reinforced
Warehouse Lighting:	LED High Bay Light Fixtures, 25 FC
Electrical:	1200 AMP, 480/277-Volt
Parking Stalls:	152 Autos
Roof:	TPO/EPDM Membrane
Zoning:	MXU - Mixed Use

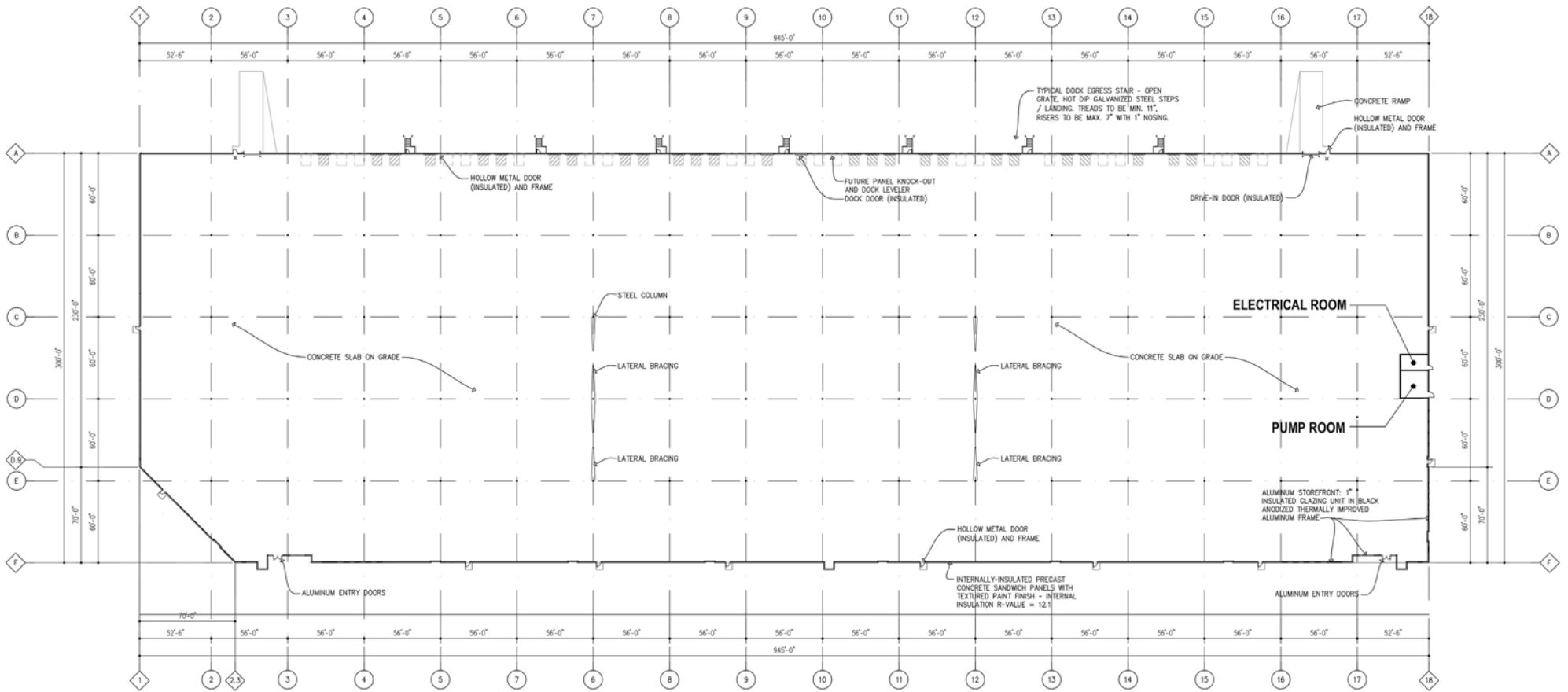


# SKYVIEW BUSINESS PARK

## FLOOR PLAN

280,826 SF • BUILDING 1

UNDER CONSTRUCTION  
CORE & SHELL COMPLETION: OCTOBER 1, 2022

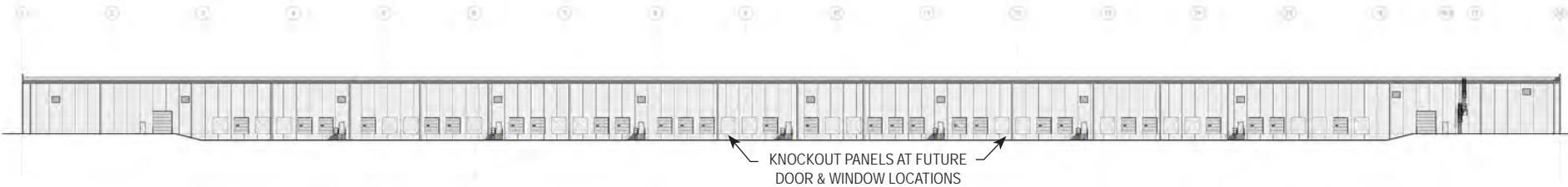


# SKYVIEW BUSINESS PARK

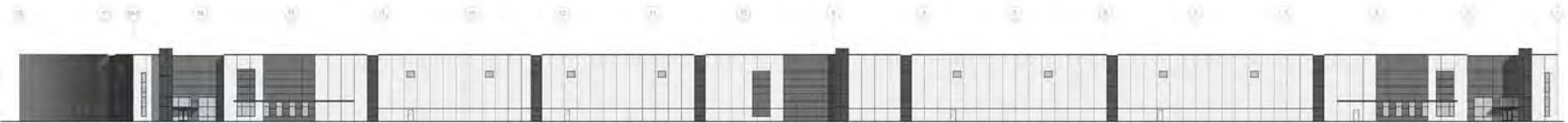
## BUILDING ELEVATIONS

280,826 SF • BUILDING 1

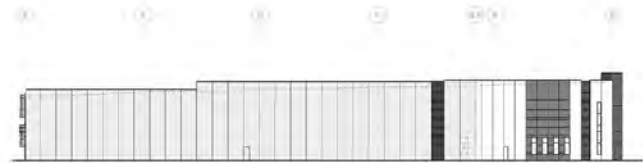
UNDER CONSTRUCTION  
CORE & SHELL COMPLETION: OCTOBER 1, 2022



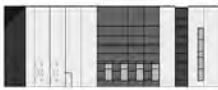
NORTH ELEVATION



SOUTH ELEVATION



WEST ELEVATION



SOUTHWEST ELEVATION



EAST ELEVATION

# SKYVIEW BUSINESS PARK

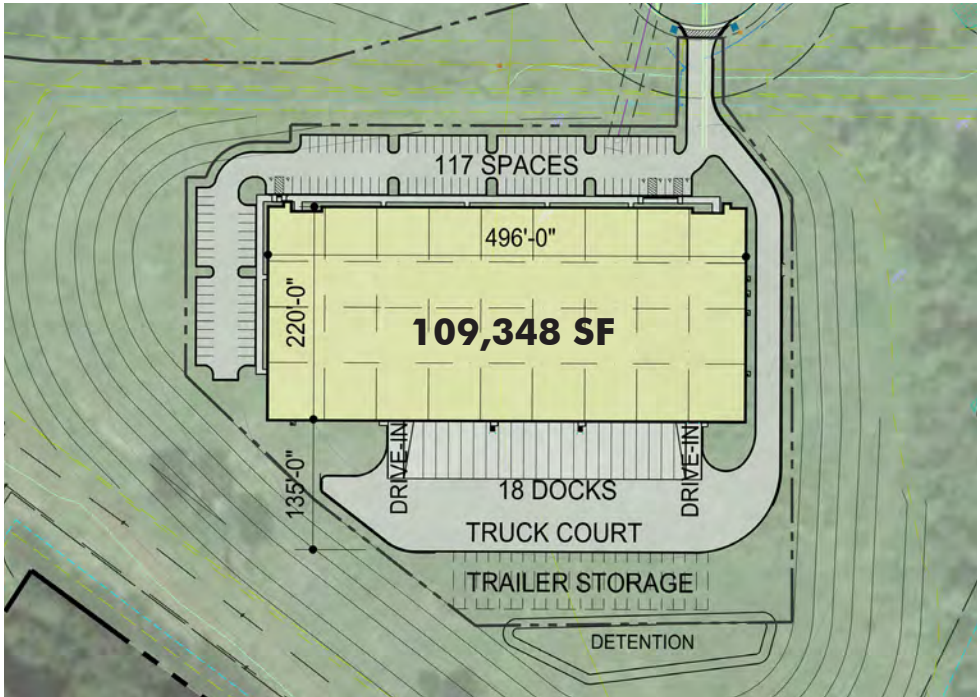
## BUILDING TWO

• 109,348 SF



UNDER CONSTRUCTION - CORE & SHELL COMPLETION: MARCH 1, 2023

Total Building Size:	109,348 SF±
Office Space:	Build to Suit
Clear Height:	28' After Loading Bay
Column Spacing:	Warehouse Bays: 53'4" x 56'
Truck Court:	130' deep
Fire Protection System:	ESFR K-17 System
Dock Positions:	18 Potential
Drive-In Doors:	2
Walls:	8" Pre-Cast Concrete Panes
Concrete Slab:	6" Reinforced
Warehouse Lighting:	LED High Bay Light Fixtures, 25 FC
Electrical:	800 AMP, 480/277-Volt
Parking Stalls:	117 Autos, 22 Trailers
Roof:	TPO/EPDM Membrane
Zoning:	MXU - Mixed Use

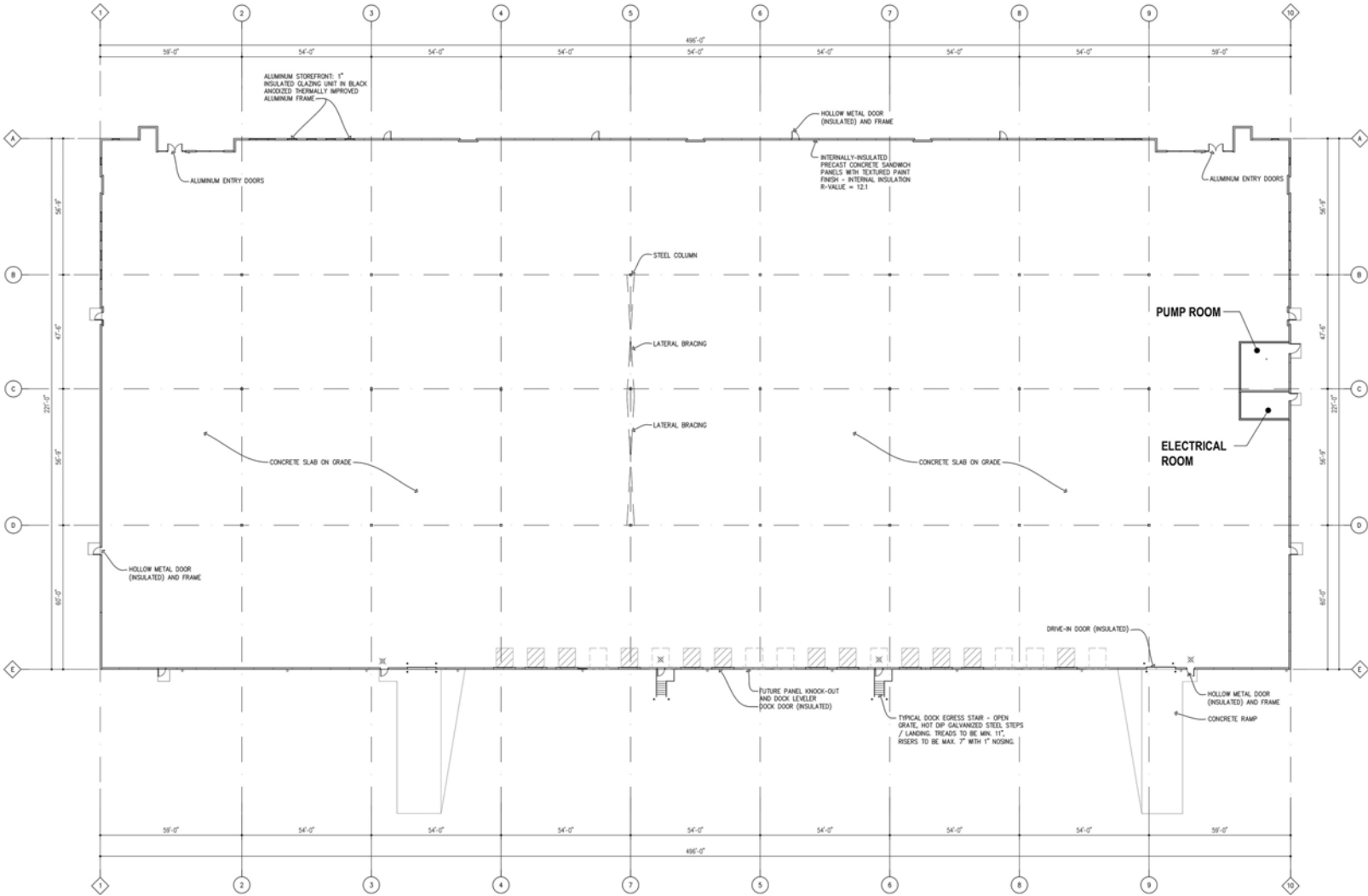


# SKYVIEW BUSINESS PARK

## FLOOR PLAN

109,348 SF • BUILDING 2

UNDER CONSTRUCTION  
CORE & SHELL COMPLETION: MARCH 1, 2023



# SKYVIEW BUSINESS PARK

## BUILDING ELEVATIONS

109,348 SF • BUILDING 2

UNDER CONSTRUCTION  
CORE & SHELL COMPLETION: MARCH 1, 2023



SOUTH ELEVATION



NORTH ELEVATION



WEST ELEVATION



EAST ELEVATION



# SKYVIEW BUSINESS PARK

## PRIME LOCATION

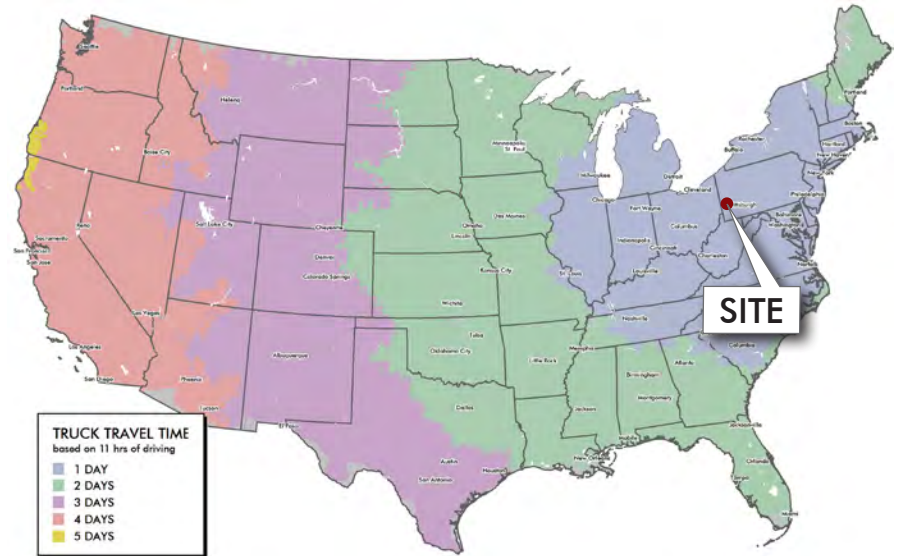
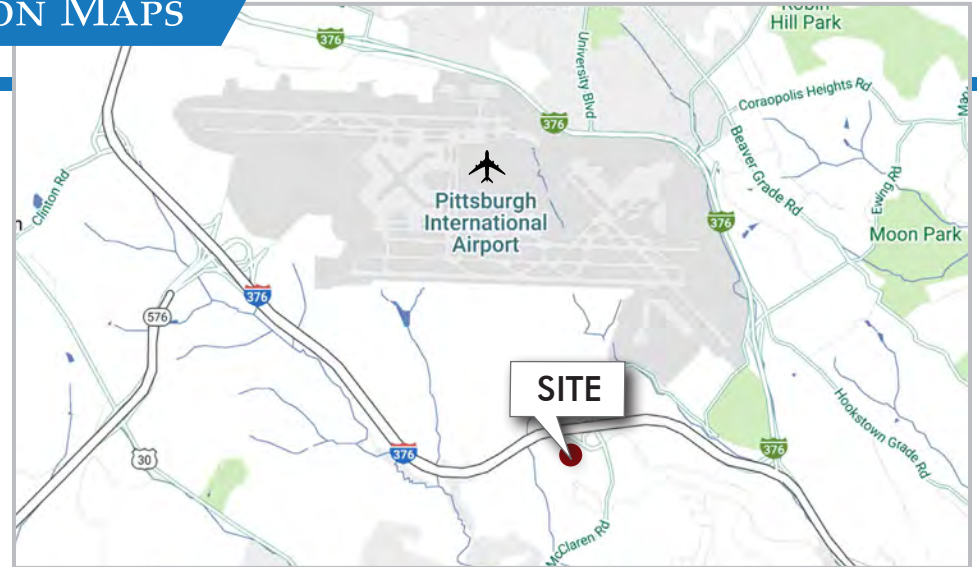


- Easy access and within close proximity to Interstate 376
- 2.5 miles / 5 minutes from Rt. 30
- 6 miles / 10 minutes from the Pittsburgh International Airport
- 7 miles / 11 minutes from Interstate 79

- 14 miles / 24 minutes from downtown Pittsburgh
- 20 miles from the Shell Ethylene Cracker Plant in Monaca
- 218 miles from Harrisburg / 319 miles from Philadelphia

# SKYVIEW BUSINESS PARK

## LOCATION MAPS



©2022 CBRE, Inc. All rights reserved. This information has been obtained from sources believed reliable, but has not been verified for accuracy or completeness. You should conduct a careful, independent investigation of the property and verify all information. Any reliance on this information is solely at your own risk. CBRE and the CBRE logo are service marks of CBRE, Inc. All other marks displayed on this document are the property of their respective owners, and the use of such logos does not imply any affiliation with or endorsement of CBRE. Photos herein are the property of their respective owners. Use of these images without the express written consent of the owner is prohibited.

## BUILDING 1



CONSTRUCTION PHOTOS - AUGUST 8, 2022



## CONTACT

**KIM CLACKSON, SIOR**  
Executive Vice President  
412.471.3018  
kim.clackson@cbre.com

**CBRE**

**MATT CLACKSON**  
Senior Vice President  
412.471.4069  
matt.clackson@cbre.com